

# DELAWARE OPEN SPACE PROGRAM

January 1, 2016 - December 31, 2020

## 5-YEAR REPORT



St. Jones Reserve Nature Trail

**Delaware Department of Natural Resources and Environmental Control  
Compiled by the Division of Parks and Recreation**

# OPEN SPACE PROGRAM SUMMARY

The Open Space (OS) Program was created in 1990 by the Delaware Land Protection Act<sup>1</sup> and has preserved some of the finest examples of Delaware's diverse natural and cultural heritage. The Program, guided by the Open Space Council, identifies areas of high ecological or cultural value to be conserved either through land acquisition or protection through conservation easement.

The OS Program is a 100% voluntary land protection program. Land acquisition includes the "fee simple" purchase of a parcel of land. A fee simple purchase transfers full ownership of the property, including the underlying title, to another party. Fee simple land acquisition may also be the result of a donation, with the landowner realizing tax benefits from the donation.

A conservation easement is a voluntary legal agreement between a landowner and the state that permanently limits uses of the land in order to protect its conservation values. Landowners retain many of their rights, including the right to own and use the land, sell it and pass it on to their heirs. The state's role is to make sure that the restrictions described in the easement are actually carried out through annual monitoring and if necessary, to take legal action to enforce the easement.<sup>2</sup>

Four agencies are eligible for Open Space Program funding:

- The Department of Natural Resources and Environmental Controls (DNREC) Division of Parks and Recreation (P&R)
- DNREC's Division of Fish and Wildlife (F&W)
- The Delaware Department of Agriculture's Delaware Forest Service (FOR), and
- The Department of State's Division of Historic and Cultural Affairs (HCA).

Section 7509(e) of the Delaware Land Protection Act states:

***"Five years after August 3, 2016, and every five years thereafter through the life of the Open Space Program, the Secretary and the Council shall report to the Governor and the General Assembly on the status and accomplishments of the Open Space Program with recommendations regarding continuation of the Open Space Program."***

This report details the projects completed during the period from January 1, 2016 to December 31, 2020.

Cape Henlopen State Park

<sup>17</sup> Del. C. Chapter 75

<sup>1</sup><https://www.landtrustalliance.org/what-you-can-do/conserving-your-land/questions>

<sup>2</sup>30 Del. C. § 5423

Ten million dollars is appropriated annually to the Open Space Program. Of that, \$9 million is deposited into an endowment account for land preservation and the remaining \$1 million is deposited into an infrastructure account to provide funds for reinvestment in key open space infrastructure, such as campgrounds, trails, visitor centers, recreational amenities, hunting, fishing and wildlife viewing areas.<sup>3</sup>

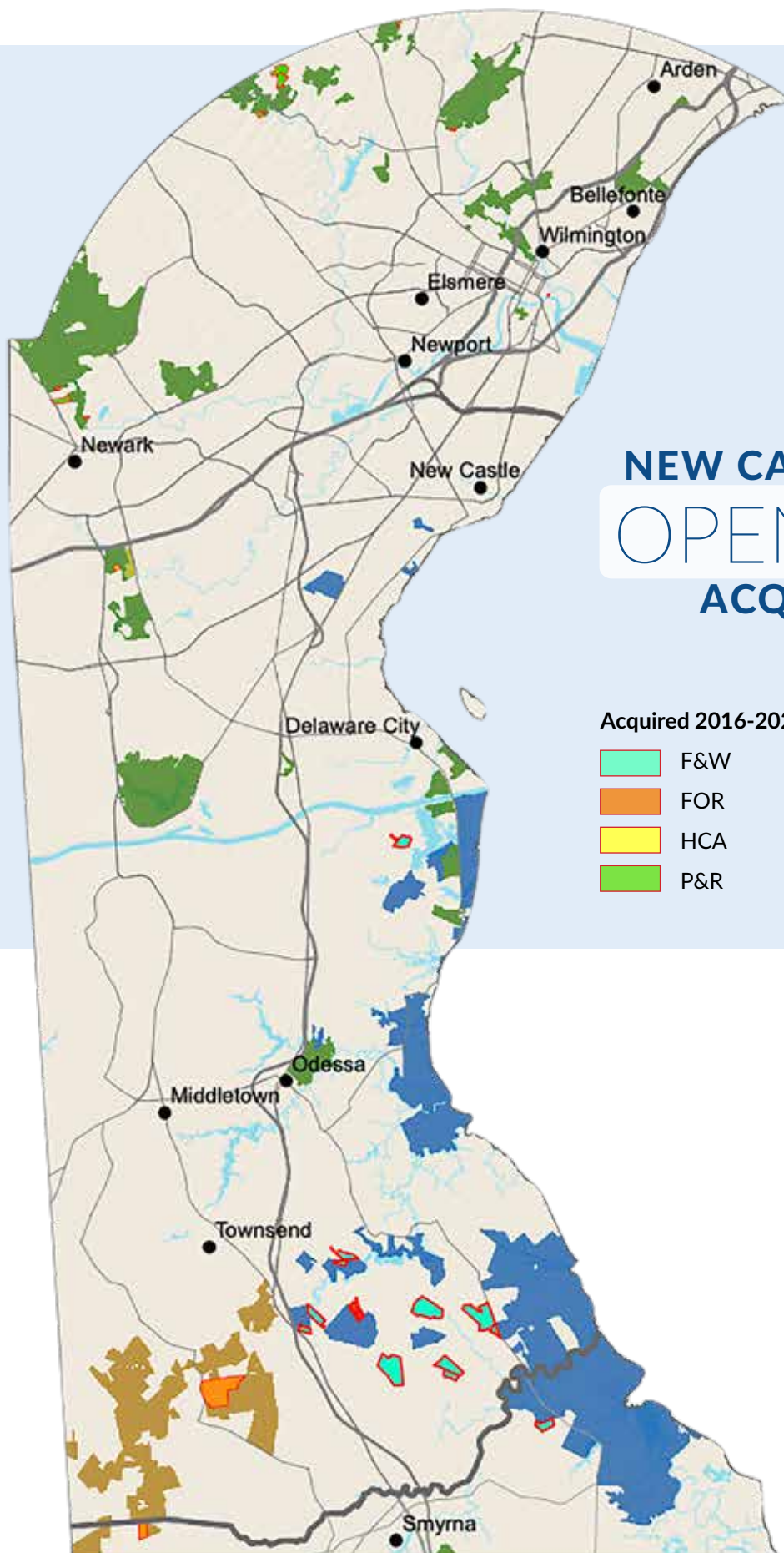
In the last five years, the Delaware Open Space Program was only appropriated \$25 million due to state budgetary constraints. The Division of Parks and Recreation, Division of Fish and Wildlife, Division of Historic and Cultural Affairs and the Delaware Forest Service utilized the appropriated funds to complete 59 projects, adding 4,888 acres of preserved land across Delaware, for a total cost of \$21,625,329.52.

2016-2020 PROJECT SUMMARY BY COUNTY				
	Projects	Acres	Open Space Funds	Partner Funds
New Castle	22	1,444	\$10,600,069.26	\$4,301,447.00
Kent	17	540	\$2,873,050.00	\$2,538,139.08
Sussex	20	2,904	\$8,152,210.26	\$5,229,637.49
<b>TOTAL</b>	<b>59</b>	<b>4,888</b>	<b>\$21,625,329.52</b>	<b>\$12,069,223.57</b>

Entering 2021, the Delaware Open Space Program has acquired a total of 63,899 acres through 488 projects. The \$286.8 million spent by the program has been joined by over \$103 million from federal and local partners.

1990-2020 PROJECT SUMMARY BY COUNTY				
	Projects	Acres	Open Space Funds	Partner Funds
New Castle	187	14,194	\$141,437,807.67	\$29,665,326.18
Kent	94	10,286	\$26,734,273.32	\$5,451,394.58
Sussex	207	39,419	\$118,639,954.05	\$68,025,548.71
<b>TOTAL</b>	<b>488</b>	<b>63,899</b>	<b>\$286,812,035.04</b>	<b>\$103,142,269.47</b>





## NEW CASTLE COUNTY OPEN SPACE ACQUISITIONS

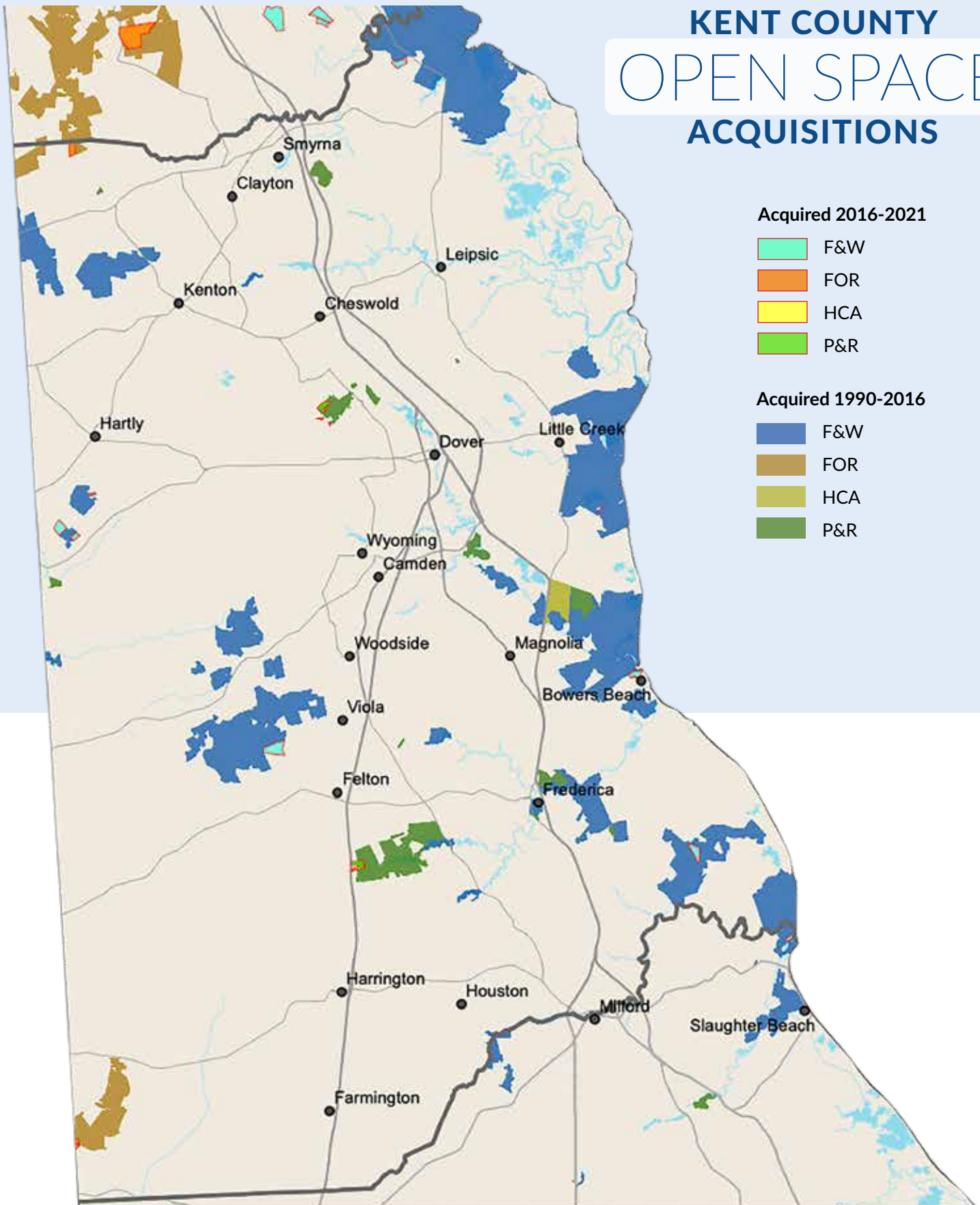
### Acquired 2016-2021

- F&W
- FOR
- HCA
- P&R

### Acquired 1990-2016

- F&W
- FOR
- HCA
- P&R

# KENT COUNTY OPEN SPACE ACQUISITIONS





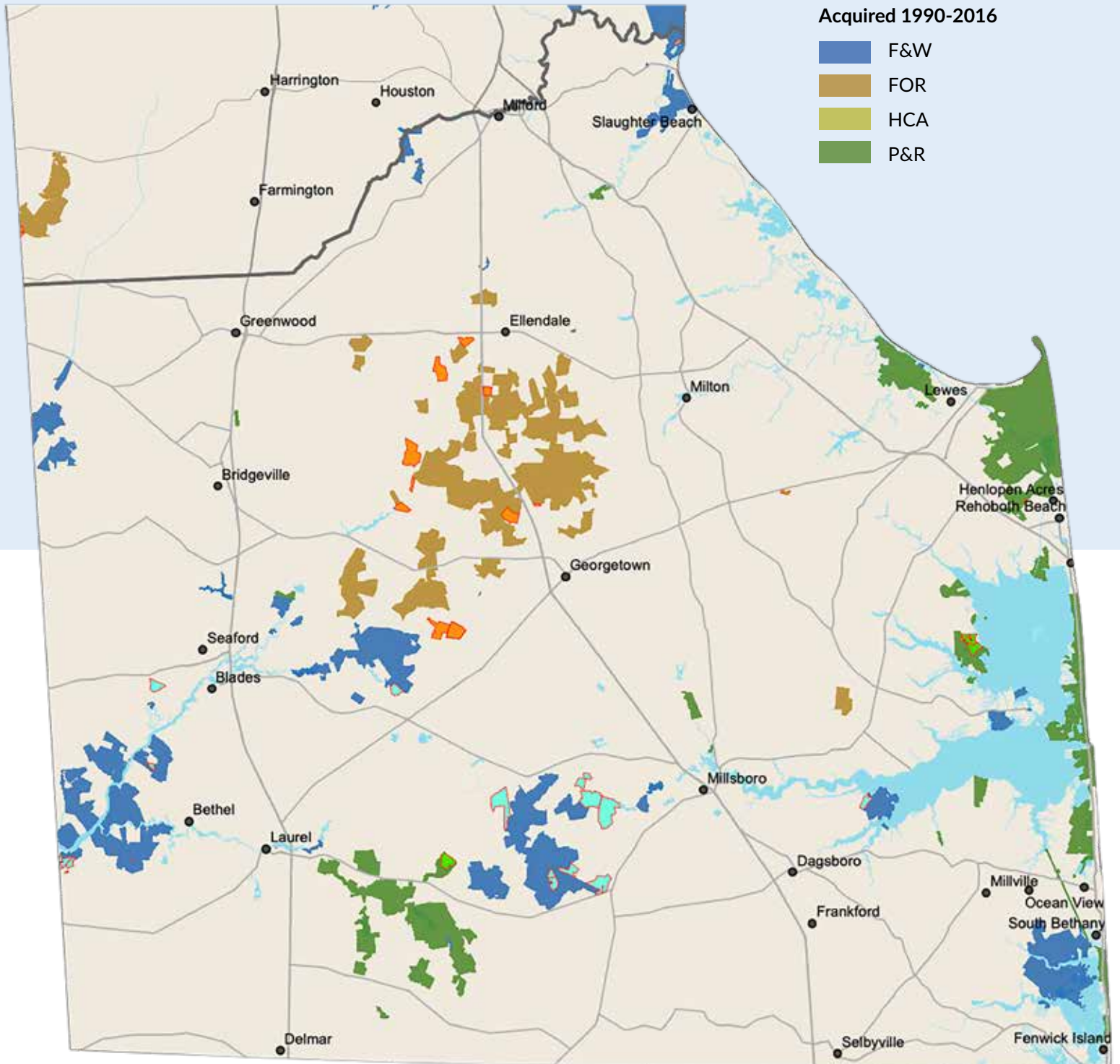
# SUSSEX COUNTY OPEN SPACE ACQUISITIONS

## Acquired 2016-2021

- F&W
- FOR
- HCA
- P&R

## Acquired 1990-2016

- F&W
- FOR
- HCA
- P&R



## 2016 OPEN SPACE ACQUISITIONS

Name	Agency	Interest	Open Space Funds	Other Money	Acres	County	Senate District	House District
A.D. Calloway Farms, LLC	F&W	Fee Simple	\$68,529.00	\$138,000.00	48.03	Sussex	21	40
Callegary Estate et al.	F&W	Fee Simple	\$350,000.00	\$0.00	53.24	Kent	14	28
The Diocesan Council, Inc.	P&R	Fee Simple	\$0.00	\$0.00	53.50	Sussex	6	14
Henry	F&W	Fee Simple	\$3,600.00	\$0.00	2.09	Sussex	21	40
The Diocesan Council, Inc.	P&R	Cons. Easement	\$1,882,000.00	\$0.00	106.98	Sussex	6	14
Eastburn Trust et al.	F&W	Fee Simple	\$0.00	\$1,442,637.00	206.97	New Castle	14	9
ABC Woodlands, LLC	F&W	Fee Simple	\$9,581.26	\$2,275,318.99	681.03	Sussex	21	40
Chance Estate et al.	F&W	Fee Simple	\$70,000.00	\$490,000.00	58.46	New Castle	14	9
Amer Trust	P&R	Fee Simple	\$0.00	\$0.00	11.49	New Castle	4	12
Jeremy Wilson, et al.	F&W	Fee Simple	\$210,000.00	\$70,000.00	65.04	Sussex	21	40
David Richard Norris, et al.	F&W	Fee Simple	\$282,630.00	\$257,370.00	42.63	New Castle	14	9
The Conservation Fund	F&W	Fee Simple	\$170,000.00	\$0.00	88.92	Sussex	21	39
Blackbird Farm, LLC The Resa B. Hesseltine Gst.	FOR	Fee Simple	\$1,931,000.00	\$0.00	326.00	New Castle	14	11
<b>Total</b>			<b>\$4,977,340.26</b>	<b>\$4,673,325.99</b>	1744.38			

## 2017 Open Space Acquisitions

Name	Agency	Interest	Open Space Money	Other Money	Acres	County	Senate District	House District
Epworth United Methodist Church	P&R	Fee Simple	\$225,000.00	\$0.00	5.76	Sussex	6	14
Rudin	P&R	Fee Simple	\$0.00	\$0.00	3.98	New Castle	4	12
ABC Woodlands Phase 2	F&W	Fee Simple	\$0.00	\$1,846,659.00	569.75	Sussex	19	40
Dukes Property	F&W	Fee Simple	\$1,000.00	\$627,159.50	66.13	Sussex	21	35
Manwaring Property	F&W	Fee Simple	\$0.00	\$391,440.00	16.31	New Castle	14	9
<b>Total</b>			<b>\$226,000.00</b>	<b>\$2,865,258.50</b>	<b>661.93</b>			

*From 1990 through 2020, the Open Space program has protected 63,791 acres, 5% of the state of Delaware! That's over 5.5 acres a day since the program's creation in 1990, one acre for every 153 Delawareans or just under .2 acres per Delaware household.*



## 2018 Open Space Acquisitions

Name	Agency	Interest	Open Space Money	Other Money	Acres	County	Senate Dist.	House Dist.
The Conservation Fund	F&W	Fee Simple	\$0.00	\$0.00	10.60	Sussex	18	36
Sinclair Property	F&W	Fee Simple	\$0.00	\$458,139.08	60.86	Kent	15	11
Roman-Foley	F&W	Fee Simple	\$0.00	\$120,000.00	42.50	Kent	16	33
Foley Property	F&W	Fee Simple	\$0.00	\$980,000.00	0.60	Kent	16	33
Roman Property	F&W	Fee Simple	\$0.00	\$980,000.00	0.60	Kent	16	33
McClements	P&R	Fee Simple	\$0.00	\$0.00	5.62	Kent	17	29
Alderman	P&R	Fee Simple	\$525,000.00	\$0.00	5.47	Sussex	6	14
Laurel Redevelopment Corporation	F&W	Fee Simple	\$0.00	\$0.00	0.40	Sussex	21	40
Evans	F&W	Fee Simple	\$200,000.00	\$0.00	0.09	Sussex	18	36
Thornton	F&W	Fee Simple	\$65,000.00	\$0.00	7.12	Kent	15	11
Masten	F&W	Fee Simple	\$260,000.00	\$0.00	57.95	Kent	16	33
Hamonko	F&W	Fee Simple	\$55,000.00	\$0.00	27.01	Kent	15	11
Cafini	F&W	Fee Simple	\$390,000.00	\$0.00	26.08	New Castle	14	9
ABC Woodlands	FOR	Fee Simple	\$1,835,000.00	\$0.00	520.71	Sussex	19	35
<b>Total</b>			<b>\$3,330,000.00</b>	<b>\$2,538,139.08</b>	<b>765.61</b>			



# 2019 Open Space Acquisitions

Name	Agency	Interest	Open Space Money	Other Money	Acres	County	Senate District	House District
Katedulwe Holdings, LLC	P&R	Fee Simple	\$700,000.00	\$550,000.00	42.01	New Castle	4	12
Reynolds	P&R	Fee Simple	\$700,000.00	\$550,000.00	44.31	New Castle	4	12
Cooch	HCA	Fee Simple	\$885,000.00	\$215,000.00	9.64	New Castle	10	25
Starr	F&W	Fee Simple	\$0.00	\$0.00	0.06	Kent	16	32
Benson	F&W	Fee Simple	\$1,050.00	\$0.00	0.06	Kent	16	32
Paddock	F&W	Fee Simple	\$0.00	\$0.00	209.89	New Castle	14	9
Collins Burrows	F&W	Fee Simple	\$1,100,000.00	\$0.00	168.52	New Castle	14	9
Seven Hawkes	F&W	Fee Simple	\$900,000.00	\$0.00	127.70	New Castle	14	9
Jones	F&W	Fee Simple	\$7,000.00	\$0.00	0.80	Kent	16	32
Glatfelter	FOR	Fee Simple	\$110,000.00	\$0.00	29.00	Kent	18	30
Hudson Park	P&R	Cons. Easement	\$250,000.00	\$0.00	15.86	Sussex	6	20
Maroney	P&R	Fee Simple	\$0.00	\$0.00	4.61	New Castle	4	12
McClements	P&R	Fee Simple	\$900,000.00	\$0.00	41.00	Kent	17	31
Borcherdt	P&R	Fee Simple	\$2,586,439.26	\$0.00	31.94	New Castle	8	23
Kaiser	HCA	Fee Simple	\$250,000.00	\$0.00	1.04	New Castle	8	23
Timmons	F&W	Fee Simple	\$390,000.00	\$110,000.00	52.41	Sussex	2	2
ABC Woodlands, LLC	FOR	Fee Simple	\$1,580,000.00	\$0.00	482.30	Sussex	20	41
<b>Total</b>			<b>\$10,359,489.26</b>	<b>\$1,425,000.00</b>	<b>1261.15</b>			

## 2020 Open Space Acquisitions

Name	Agency	Interest	Open Space Money	Other Money	Acres	County	Senate District	House District
Layton	P&R	Fee Simple	\$640,000.00	\$0.00	107	Sussex	18	35
Geffon	P&R	Fee Simple	\$475,000.00	\$0.00	51.74	Kent	15	30
Troyer	F&W	Fee Simple	\$440,000.00	\$0.00	114.52	Kent	15	30
Cafini 2	F&W	Fee Simple	\$220,000.00	\$0.00	18.25	New Castle	14	9
Dube	F&W	Fee Simple	\$250,000.00	\$0.00	21.82	New Castle	14	9
Shilling	F&W	Fee Simple	\$135,000.00	\$405,000.00	53.6	New Castle	14	9
Cafini Adele	F&W	Fee Simple	\$200,000.00	\$0.00	15.8	New Castle	14	9
O Paper Mill Road	P&R	Fee Simple	\$0.00	\$0.00	3.33	New Castle	8	23
Katz	FOR	Fee Simple	\$210,000.00	\$0.00	47.64	Kent	15	11
Shat, LLC	F&W	Fee Simple	\$162,500.00	\$162,500.00	21.45	Sussex	21	39
<b>Total</b>			<b>\$2,732,500.00</b>	<b>\$567,500.00</b>	<b>455.15</b>			





Oversee Farm Tree, Auburn Valley State Park

**Delaware Department of Natural Resources  
and Environmental Control  
89 Kings Highway  
Dover, DE 19901**